

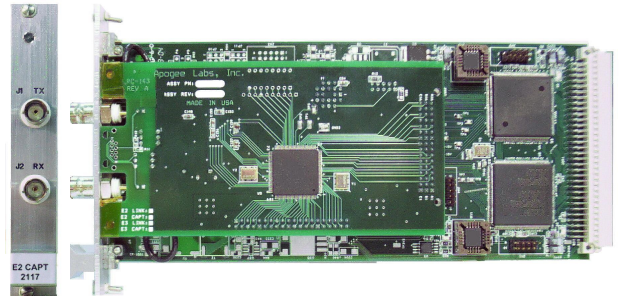


TECHNICAL NOTE

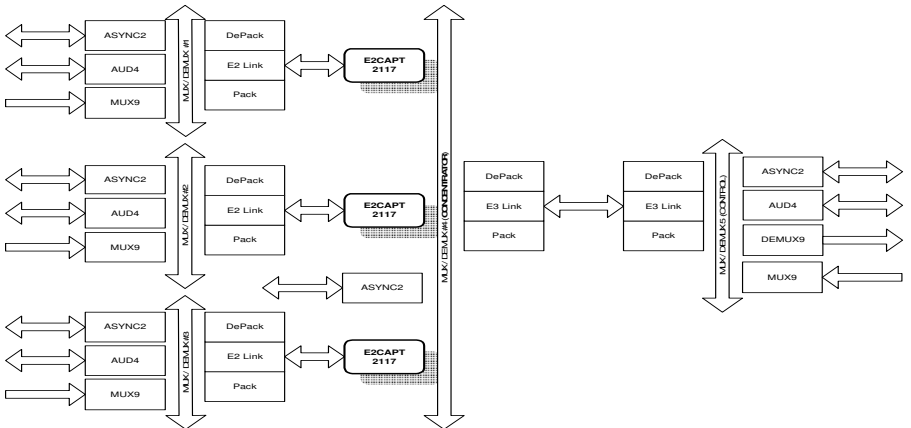
AL4300 PRODUCT LINE

**MODEL 2117 E2CAPT
PACKETIZER / DEPACKETIZER
E2 DATA LINK INTERFACE
LINK-TO-CHANNEL INTERFACE**

The E2CAPT module combines the functions of a full-duplex unchannelized E2 interface and a packetizer and depacketizer for the Apogee Labs AL4300 series of multiplex / demultiplex systems. The connections of the packetizer and the depacketizer to the multiplex and demultiplex busses are reversed from normal permitting the E2CAPT module to function like a bi-directional link-to-channel interface module. The E2CAPT is therefore suitable for data concentration applications.



The block diagram shows a five node system. The composite data streams produced by nodes one through three are captured by E2CAPT modules in node four. The data source(s) in node four are merged and concentrated with the captured composite streams received from nodes one through four and passed to the node five (control).



These modules are designed as point-to-point data-link packetizer and depacketizer devices for data concentration applications. The E2CAPT modules support system configurations where the distance between system nodes is up to 1300 feet.

SPECIFICATIONS

- Incorporates Packetizer and Depacketizer in Channel-card configuration
- Generates / Collects Composite Transfer Frames
- Enables Data Concentration Function
- Multiplexes / Demultiplexes Source Packets from and to Application Modules
- Supports 1 ms or 10 ms Sample Interval
- Equalization Control for Cable Lengths to 1300 Ft.
- Data Code Violation Detection
- 8448 kbps (E2) Line Rate
- HDB3 Data Coding
- Line Quality Monitor
- Receive Loss of Signal Detection
- G.703 Wave-shape Mask
- G.823 Jitter Requirement
- Transfer Frame Format: 8192 bits / Frame, CCSDS Packet Telemetry Format with Attached Synchronization Pattern

APOGEE LABS, INC.

210 South Third Street
North Wales, PA 19454

Phone: 215.699.2060

Fax: 215.699.2061

Email: sales@apogeelabs.com

Internet: www.apogeelabs.com