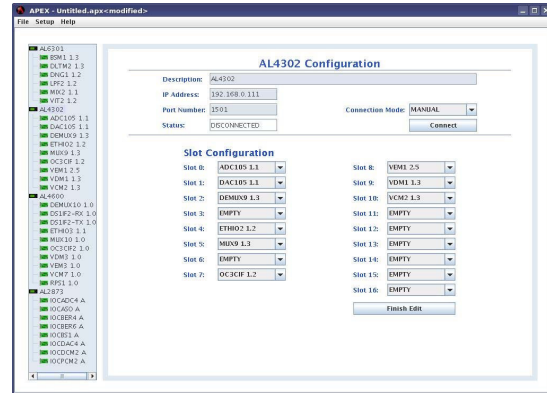




**GUI001**  
**APogee EXtended (APEX)**  
**Remote Control Software**



**FEATURES**

- Java-based, OS independent remote control software
- Controls multiple chassis' (nodes) and cards (modules) in one easy to use interface
- Save and load system configurations

**OVERVIEW**

The APEX remote control software provides an easy to setup and use GUI to control multiple chassis' (nodes) and cards (modules) from a single remote interface.

APEX gives the ability to read and set all read-only statuses and read-write parameters on supported products. Once a system is configured for a certain test, APEX can save these configurations in order to rapidly switch between tests, thus reducing setup time.

**SPECIFICATIONS**

**MINIMUM SYSTEM REQUIREMENTS**

- Windows XP, Linux. Others available via request
- Java Runtime Environment (JRE) version 1.6
- 32 Megabytes of RAM
- 32 Megabytes of hard drive space

**SUPPORTED PRODUCT LINES**

- AL2873
- AL4302
- AL4600
- AL4700
- AL6301

### APPLICATION NOTES

The APEX user interface has been implemented for many of Apogee Lab’s products. The screen shot below illustrates how one software package provides the user the ability to control items from multiple product families.

The column on the left of the screen shot shows the configuration of each chassis interfacing with APEX. Each chassis contains its own independent IP address and port number. The “Status” display lets the user know whether or not they are connected to a particular system.

Each slot is independently configurable with items supported by APEX. Please contact the factory with any questions regarding compatibility.

