

Telemetry needs have evolved... So have we.

Introducing the next generation Apogee Mux.



20 years of telemetry experience in one box.

AL1025

Quad Channel TMoIP Processor

4-Channel Capability in a Single Chassis



The AL1025 distributes Serial PCM data over a wide range of commercial IP-based networks, in real time and with very low latency... either short distances through a LAN or longer distances through a WAN or ISP. The system enables the transmission of multiple telemetry streams from one point to multiple locations while maintaining their time-date relationships, making it a highly reliable and economical alternative to dedicated serial interconnection systems. Moreover, the embedded system management software is easy to set-up and enables monitoring of the distribution network via a user-friendly Graphic User Interface (GUI) or secure SNMP Connection.

- Cost effective Ethernet transport of 4 PCM Links
- TCP/IPv4 and TCP/IPv6 compliant
- Minimal overhead and ultra-low latency
- Serial PCM channel TTL, 1kbps - 40Mbps
- Web browser-based remote control
- Flexible Configuration: Each channel can be configured as either an input or output
- 10/100/1000 Mbps Ethernet interface
- Integrated BERT with link delay
- Low profile form factor - 1U Chassis
- Unique remote address for each channel

Optional Bit Sync capability for data sources which are asynchronous. Contact us to discuss your specific requirements!



SPECIFICATIONS

PCM DATA INPUT

- 1 kbps – 40 Mbps
- TTL data/clock Input - 50/75 Ohm, BNC connector
- Optional Bit Sync capability. Contact factory for details.

PCM DATA OUTPUT

- Supports rates from 1 kbps to 40 Mbps
- TTL data/clock output - BNC connector drives a 50/75 Ohm load

BIT ERROR RATE TESTER (BERT)

- Integrated BERT Interface
- BNC Connectors, 75 ohms
- TTL Compatible
- Rates from 100 bps - 40 Mbps

POWER

- IEC 320-C14 jack
- Supply voltage 90 – 264 VAC

ENVIRONMENT

- Operating temperature: 0° C to +55° C
- Storage temperature: -40° C to +70° C
- 16.63" W x 13" L x 1.75" H
- Weight: approximately 6.5 lbs

RELATIVE HUMIDITY

- Humidity: up to 95% non-condensing

ETHERNET INTERFACES

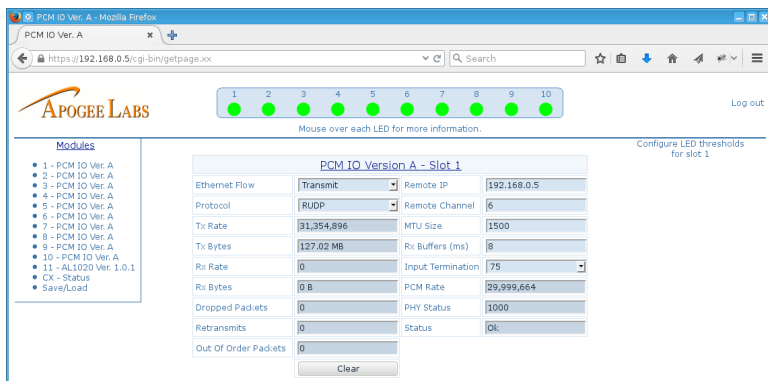
- SNMP v2 and v3
- 10/100/1000 Mbps Ethernet connectivity
- Protocols supported:
 - TCP/IPv4 & IPv6
 - UDP/IP Unicast
 - ARP
 - TMOIP
 - UDP/IP Multicast
 - DHCP
 - SMB
 - UDP/IP Broadcast
 - Retransmit UDP/IP Unicast
 - ICMPv6
 - SSH / Telnet

FRONT PANEL DISPLAY

- 4 line LCD Display for setup/status
- Software lockable to make read only
- User keys for display control

Although Apogee Labs does attempt to provide specifications that are accurate, these specifications are subject to change or correction. Please contact a Sales Engineer to discuss requirements

SYSTEM MANAGEMENT SOFTWARE



Ease of set-up and use and rapid diagnostic capabilities are the cornerstones of the embedded AL1020 system management software. The specialized software provides top level management information on each end of the TMOIP connection, including data to assess network functionality. Moreover, with remote control capability, operators at any end of the TMOIP network can drill down to view the telemetry data from any input channel and assess channel status, I/O counts and parameters, IRIG timing, and error counts, among other data... all through the user-friendly Graphic User Interface (GUI) or a secure SNMP connection.

APPLICATION OVERVIEW

